



Examination of the alarm detection using the alarm index Hamburg Water Quality Measuring Network

Presented by:
Dipl.-Ing. Michael Lechelt
Dipl.-Ing Werner Blohm



Institut für Hygiene und Umwelt

Hamburger Landesinstitut für Lebensmittel-sicherheit,
Gesundheitsschutz und Umweltuntersuchungen



After finishing the project EASE, the “Internationale Kommission zum Schutz der Elbe” (IKSE) has called for an examination of the AI-Viewer module.

The AI-Viewer was checked at the three monitoring stations Schmilka (Sachsen), Cumlosen (Brandenburg) und Bunthaus (Hamburg). Furthermore the test was checked in all the Hamburg monitoring stations.

The examination was carried out in June 2005 and July 2006.

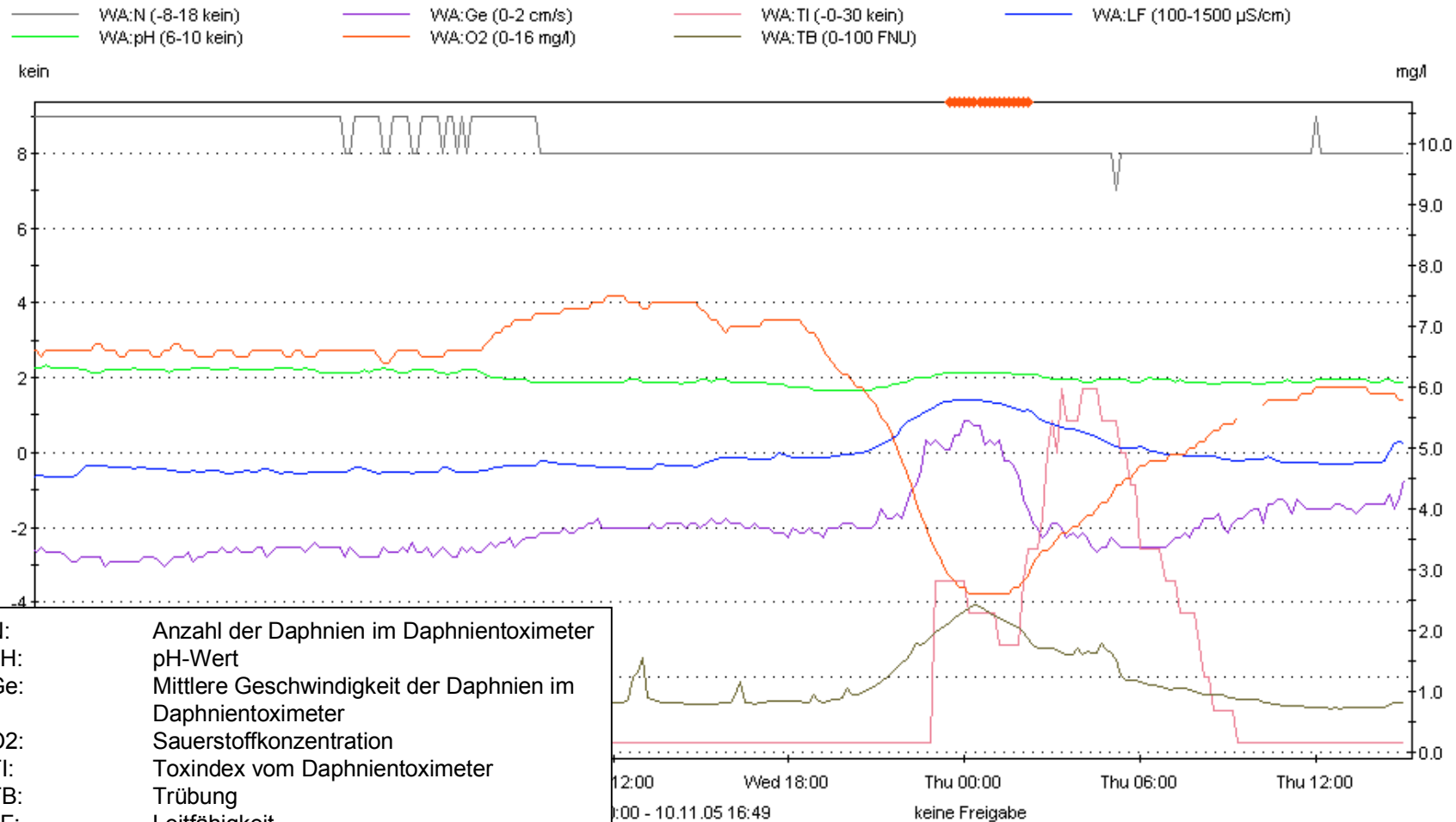
The question was:

- Is the automated calculation of the Alarm Index in combination with “dynamical unusual event test” suitable for alarm detection in monitoring stations?



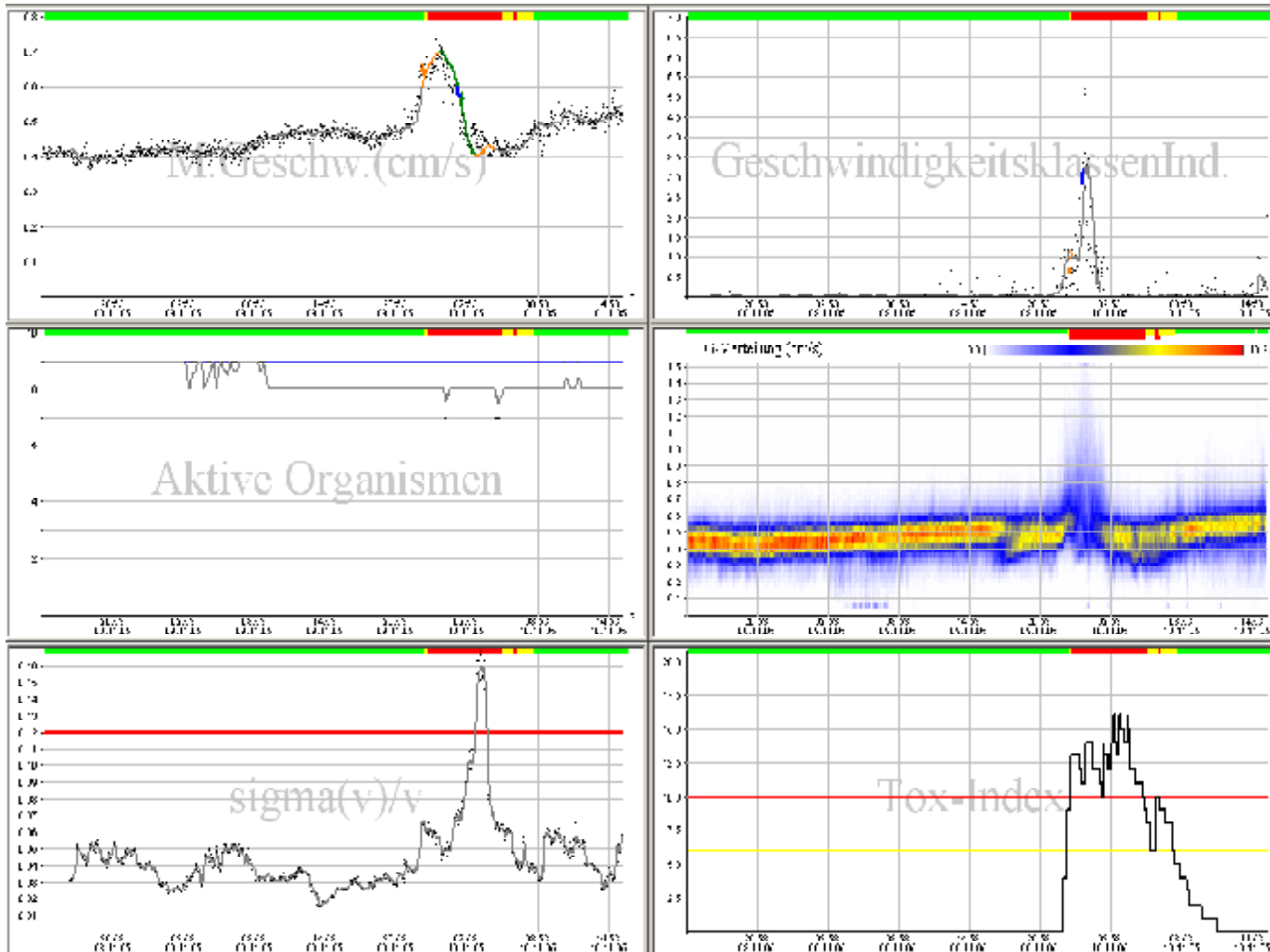
Example 1: Measurement Station Wandsbeker Allee / Wandse, Hamburg 9.11.05

3



Example 1: Measurement Station Wandsbeker Allee / Wandse, Hamburg 9.11.05

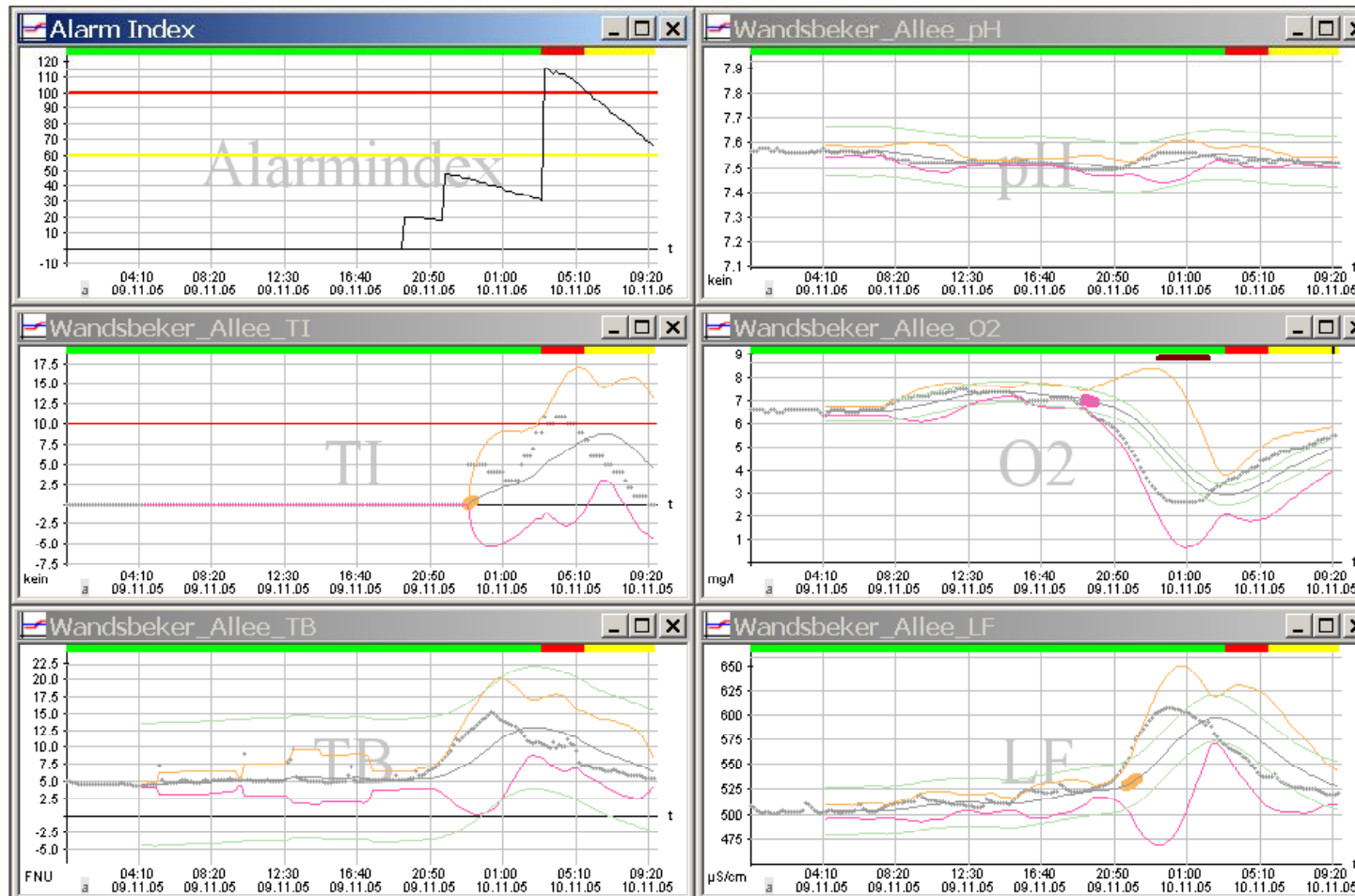
4



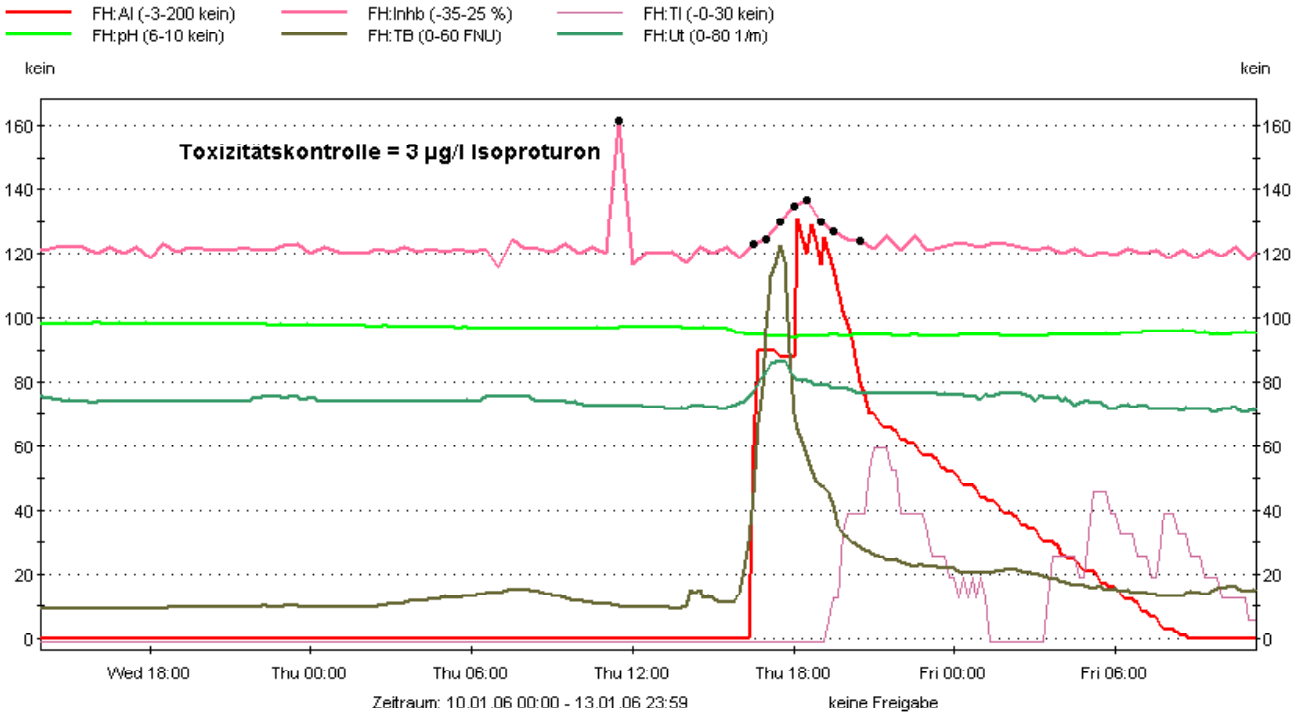
In verschiedenen Messparametern des **Daphnientoximeters** war die Erhöhung der Aktivität deutlich zu erkennen.

Example 1: Measurement Station Wandsbeker Allee / Wandse, Hamburg 9.11.05

5

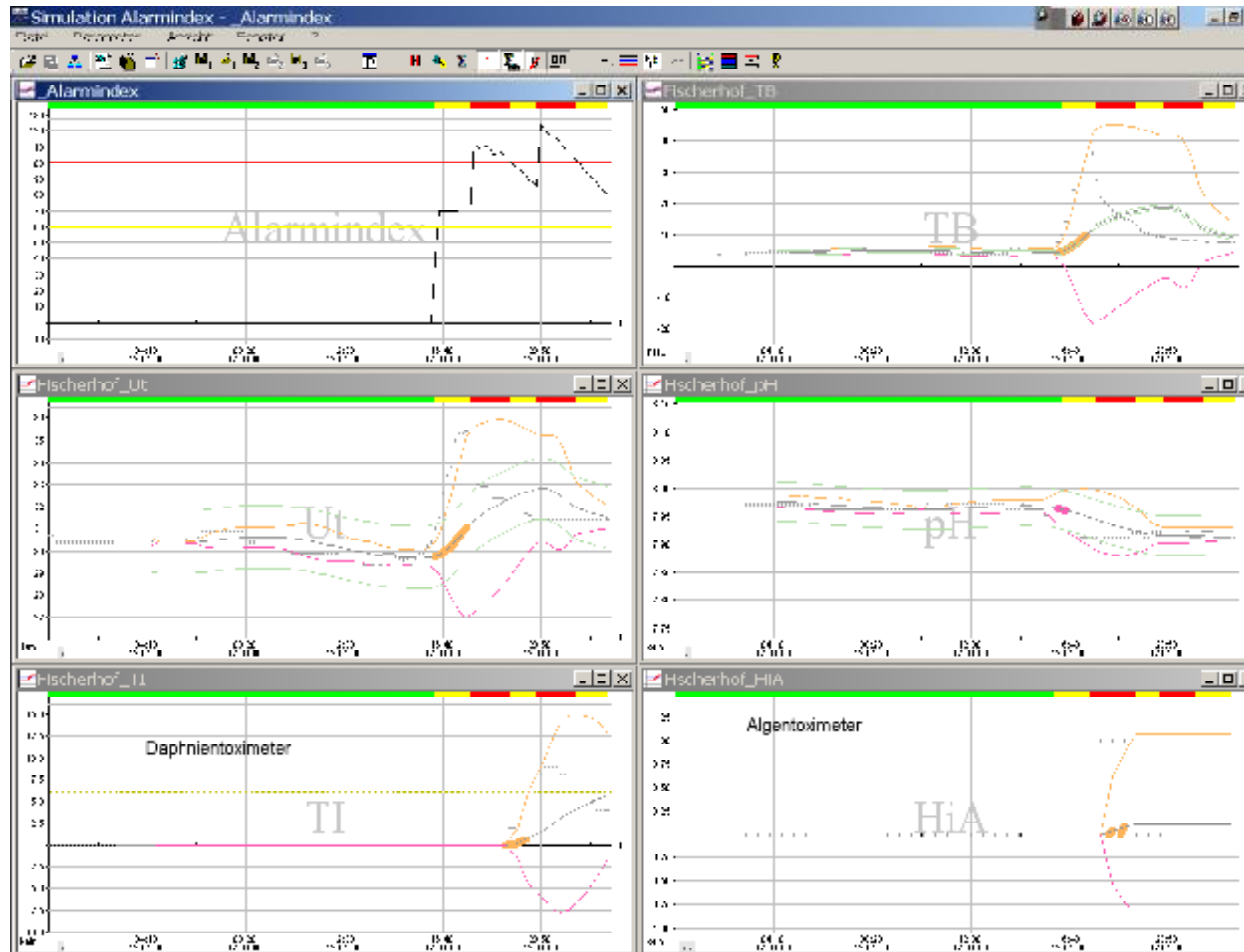


Example 2: Measurement Station Fischerhof / Bille Hamburg 12.01.06



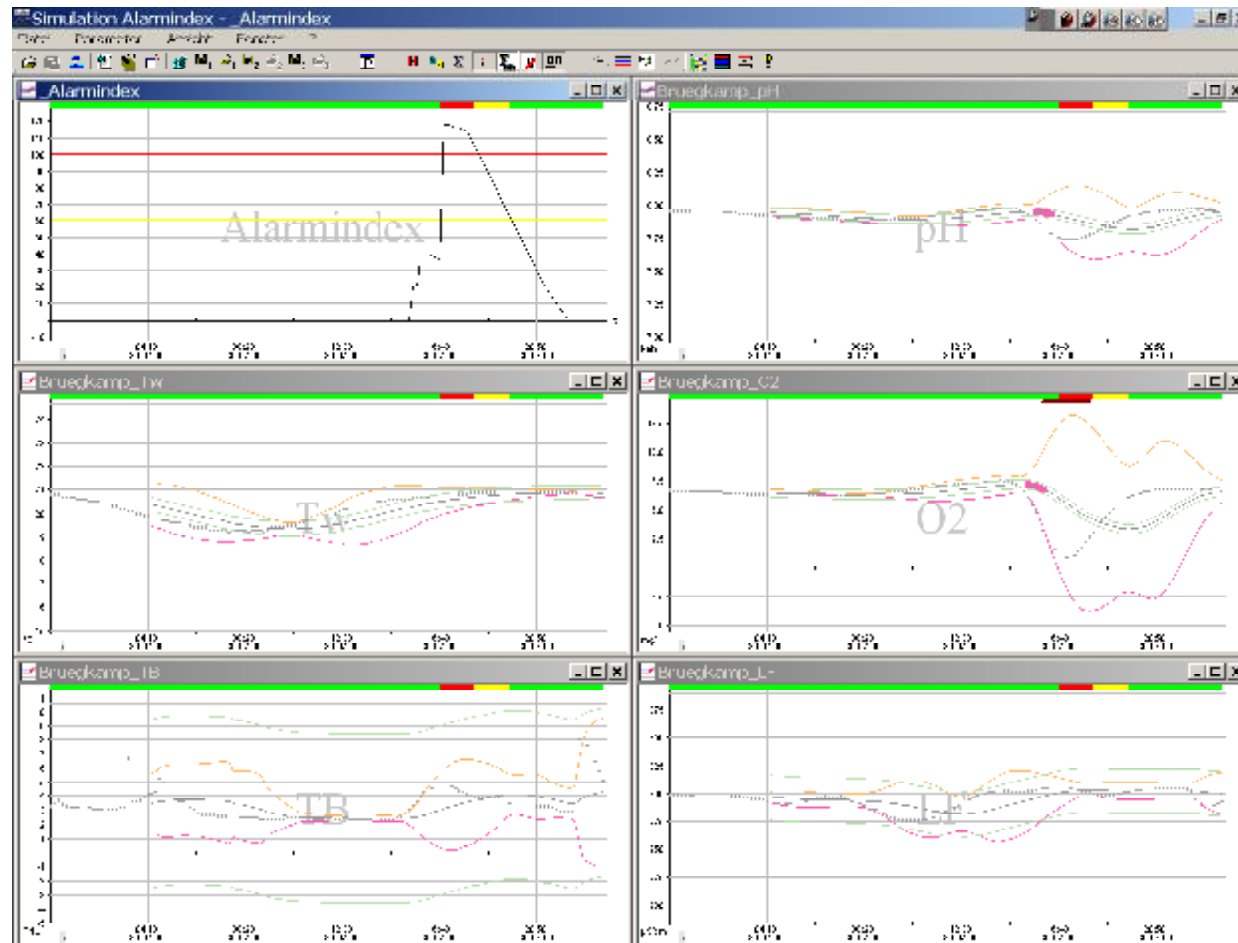
Example 2: Measurement Station Fischerhof / Bille Hamburg 12.01.06

7



Example 3: Measurement Station Brückamp / Ammersbek Hamburg 30.07.06

9



Institut für Hygiene und Umwelt

Hamburger Landesinstitut für Lebensmittel-sicherheit,
Gesundheitsschutz und Umweltuntersuchungen

- **Reliable function of the AI-viewer at the measurement stations**
- **For safety results a good adjustment of the internal parameters is needed**
- **After the test, recommendation was given to the international commission for Elbe protection (IKSE) to implement the alarm index.**



Thank you for your attention!



Institut für Hygiene und Umwelt

Hamburger Landesinstitut für Lebensmittelsicherheit,
Gesundheitsschutz und Umweltuntersuchungen

